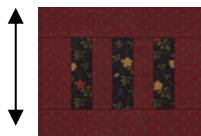
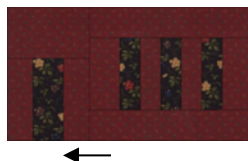


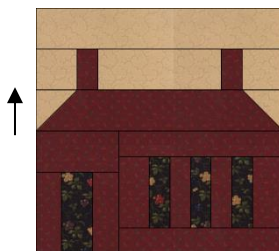
Sew a red (D) rectangle to the top and bottom of the window section. Press toward the (D) pieces.



Sew the door section to the window section as shown. Press seam toward the door section.



Sew the roof section to the window/door section. Press seam toward the roof section. Square block to 12½" x 12½".



Next Month's Block – Kansas Troubles



2014 Saturday Sampler
Skill Building Kansas Sampler

We hope you are enjoying our Kansas Sampler blocks. This month's block is the Schoolhouse. This block dates as far back as the 1890s and was also known as the Old Kentucky Home, Old Folks at Home, and Lincoln's Log Cabin block.

If you have any problems with any of the blocks in this series, please feel free to call the shop at 913-682-8000 or stop by and we will be happy to help you.

Thank you again for joining us and we look forward to serving you and your creativity. Happy Quilting!

First City Quilts

Skill Building Kansas Sampler

Block Four – Schoolhouse Block
Quilt designed and written by Maria McKenzie



First City Quilts LLC
200 South 5th Street
Leavenworth, KS 66048
913-682-8000
www.firstcityquilts.com

Block Four – Schoolhouse Block

NOTE: Please keep your pieces organized and label them before sewing to minimize errors when assembling.

Cutting Instructions:

Cream

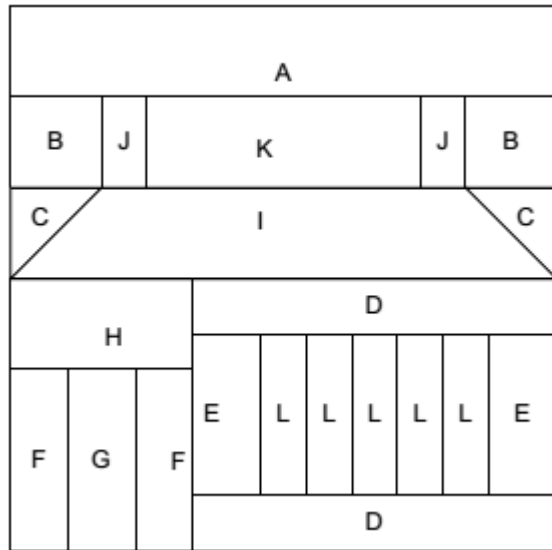
- Cut (1) - 2½" x 12½" strip (A)
- Cut (4) - 2½" x 2½" squares (2-B & 2-C)
- Cut (1) - 2½" x 6½" rectangle (K)

Red

- Cut (1) - 2½" x 21" strip; sub-cut into:
 - Cut (1) - 2½" x 12½" rectangle (I)
 - Cut (1) - 2½" x 4½" rectangle (H)
- Cut (1) - 2" x 21" strip; sub-cut into:
 - Cut (2) - 2" x 4" rectangles (E)
 - Cut (2) - 1¾" x 4½" rectangles (F)
- Cut (1) - 1¾" x 21" strip; sub-cut into (2) - 1¾" x 8½" rectangles (D)
- Cut (1) - 1½" x 21" strip; sub-cut into:
 - Cut (2) - 1½" x 2½" rectangles (J)
 - Cut (2) - 1½" x 4" rectangles (L)

Blue

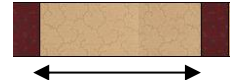
- Cut (1) - 2" x 4½" rectangle (G)
- Cut (3) - 1½" x 4" rectangles (L)



Sewing Instructions:

Use ¼" seam allowance unless otherwise noted.

Sew a cream (K) rectangle between two red (J) rectangles. Press seams toward the red.



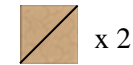
Sew a cream (B) square to the ends of the red/cream unit. Press seams toward the red.



Sew a cream (A) rectangle to the top of the unit. Press seam toward piece (A).



Draw a diagonal line across the wrong side of two cream (C) squares.



Align a cream (C) square on the left side of the red (I) rectangle, right sides together. Sew on the drawn line, trim off corner ¼" past seam and press toward the cream. Align a cream (C) square, right sides together, on the right side of the red (I) rectangle as shown. Sew on the drawn line, trim off corner ¼" past seam and press toward the cream.



Sew the roof unit to the chimney unit. Press seam toward the roof unit.



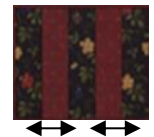
Sew a blue (G) rectangle between two red (F) rectangles. Press seams toward the blue.



Sew a red (H) rectangle to the top of the unit. Press seam toward the (H) piece to form the door section.



Sew a blue (L) rectangle to a red (L) rectangle. Make two units. Press seams toward the blue. Sew the units together as shown. Sew a blue (L) rectangle to the red end of the unit. Press all seams toward the blue.



Sew a red (E) rectangle to the blue ends of the unit to form the window section. Press seams toward the blue.

